

Biological Anthropology

(Anth 2307, 002) Spring 2012

INSTRUCTOR: Dr. Naomi Cleghorn
Dept. of Sociology and Anthropology, Room 421
Email: Cleghorn@uta.edu
Office Hours: Monday 12:15 - 2:15, or by appointment
Dept. of Sociology and Anthropology Phone: 817-272-2661

TEACHING ASSISTANTS: Zachary Overfield (zachary.overfield@mavs.uta.edu)
& Destiny Micklin (destiny.micklin@mavs.uta.edu)

ANTHROPOLOGY TUTOR: Christopher Shelton (christopher.shelton@mavs.uta.edu)

CLASS MEETS: Tuesday, Thursday, 2:00 - 3:20 pm in University Hall, room 09

COURSE DESCRIPTION:

Biological anthropologists study the biology of humans and other primates - together with their respective fossil records - in order to understand the evolutionary context for modern human behavior, anatomy, and genetics. In this course we will examine a wide range of evidence from the behavioral and natural sciences in order to better understand the place of humans in the world.

The course is divided into three sections:
1: Genetics and modern human variation
2: Non-human primate behavior and anatomy
3: The fossil record and human origins



The class will include lecture and discussion, as well as a few in-class laboratory exercises. During laboratory exercises, students will have an opportunity to examine casts of some of the most significant fossil hominins and primates. Students are expected to attend all lectures and read assigned text sections before coming to class. In addition, each student will choose at least one book from the "Additional Readings" list to read at their own pace over first half of the semester.

STUDENT LEARNING OUTCOMES:

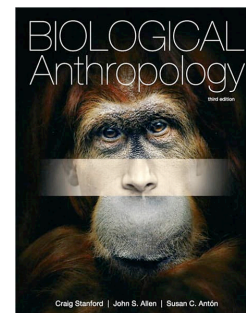
Upon completion of the course, students will be able to:

- Understand the **basic concepts of evolution** and the **mechanisms of inheritance**.
- Describe the **nature of human diversity and adaptation**.
- Appreciate the range of **primate behavior and anatomy**, and the relevance of these to humans.
- Describe the **key trends in hominin evolution**.

REQUIRED TEXTS:

Biological Anthropology: 3rd edition

by Craig Stanford, John S. Allen and Susan C. Anton, 2013



ADDITIONAL REQUIRED READING:

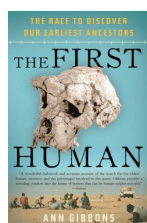
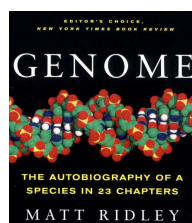
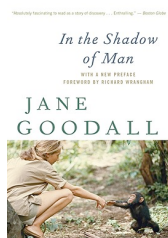
This text will be relevant to the Essay assignment described below.

Choose at least one of the following books:

In the Shadow of Man by Jane Goodall 1971 (or any reprint)

Genome by Matt Ridley (2006 edition)

The First Human by Ann Gibbons (2006)



***At least one of these should be completed by the midterm exam.** There will be at least one exam question specific your text.

OTHER REQUIRED MATERIALS:

Scantron forms 882-E. You should have at least 15 of these, and you should bring one to class everyday.

IMPORTANT DATES: Note the unit quizzes and exams!

GRADED ASSIGNMENTS	Due Date / Test Date	% of Grade
On-line Plagiarism tutorial	January 26 th	1
Worksheet 1	February 9 th	5
Unit Quiz I	February 14th	10
Worksheet 2	March 8 th	5
Midterm	March 20th	20
Short Essay	March 27 th	5
Unit Quiz II	April 17th	10
Worksheet 3	May 3 rd	5
Final Exam	Tuesday, May 8th, 2:00-4:30 pm	25

REQUIREMENTS

- **Participation (10%):** Students are expected to be present on time at all class meetings, and prepared to discuss all assigned readings. Absence, lateness, or a failure to read text assignments prior to class will result in a lowered participation grade. Students are allowed 3 excused absences during the semester without penalty. If late, students will be counted as absent. If absent, students will still be responsible for any assignments due.
- **Essay (5%):** Students will address an assigned question (or questions) related to their choice of text (see above) in a short essay (2 pages maximum).
- **Worksheets (3 worth 5% each = 15%):** The worksheets reinforce concepts taken directly from the Stanford *et al.* text and in-class assignments.
- **On-line Plagiarism Tutorial (1%):** Although the completion of the tutorial only counts for 1% of your grade, **you must complete the assignment to get credit** for all required worksheets and the essay. The on-line tutorial on Plagiarism is available on UTA's library web site. Go to the main library page and look under "Quick Links" for the plagiarism tutorial. You must pass this with a score of 100% in order to get credit for the tutorial (the site itself will tell you that 70% is passing, but we have higher expectations in anthropology). You can take the tutorial as many times as you require to achieve 100% accuracy. At the conclusion of a successful test, you will be able to email your results to me.
- **Unit Quizzes (2 worth 10% each = 20%):** These two quizzes cover material from lecture and the Stanford *et al.* text. They are not cumulative.
- **Pop Quizzes (4%):** These will cover material from the Stanford *et al.* text. The reading should therefore be completed before class on the day assigned (see the schedule below). These will be scantron quizzes - so be sure to always bring your scantron forms (882-E) to class. Your lowest pop quiz grade will be automatically dropped.
- **Midterm (20%):** The midterm exam covers everything studied in lecture and Stanford *et al.* to date (cumulative).
- **Final Exam (25%):** The final exam will be cumulative, but with an emphasis on the latter part of the semester.



COURSE POLICIES:

MAKE-UP EXAM POLICY:

----- *There are no make-up exams!* -----

If a serious illness, emergency situation, jury duty, or military service obligation arises that prevents you from attending one of the four tests (Unity Quiz 1 or 2, Midterm, or the Final), contact me immediately. In this situation, the grade points of the test you miss will be distributed to the other three tests in the following manner:

One missed quiz:	Other unit quiz = 10%, Mid-term 25%, and Final = 30% each
Missed Midterm	Unit quizzes = 15% each, Final = 35%
Missed Final Exam:	Unit quizzes = 20% each, Mid-term = 25%

Warning!!

If you miss *two* tests for any reason, you will not receive any credit for either test. If this happens, you should seriously consider withdrawing from the course.

This grade redistribution will only apply in the case of the extraordinary circumstances listed above. Lying about such an emergency will be considered academic dishonesty, and will result in a failing grade.

ACADEMIC INTEGRITY:

As a student of the University of Texas at Arlington, you are expected to maintain the highest standards of academic integrity. Any instance of academic dishonesty will have a significant negative impact on your scholastic record, not to mention your grade in this class.

Discipline may include a **failing grade** together with either **suspension** or **expulsion** from the University of Texas. The Board of Regents has defined academic dishonesty as follows:

"Scholastic dishonesty includes but is not limited to cheating, plagiarism, collusion, the submission for credit of any work or materials that are attributable in whole or in part to another person, taking an examination for another person, any act designed to give unfair advantage to a student or the attempt to commit such acts." (Regents' Rules and Regulations, Series 50101, Section 2.2).

LATE WORK POLICY:

Assignments are graded down 10% of their value per day after the due date.

ATTENDANCE POLICY:

Attendance and punctuality are required (see Participation grade above). Walking in late is rude and distracting - don't do it! Students will be graded as absent if they enter the classroom after lecture has begun, or use a cell phone or any electronic communication device during class. (I suggest you set your cell phone to silent, but I will forgive the occasional accidental ringing.)

DROP POLICY:

Students may drop or swap (adding and dropping a class concurrently) classes through self-service in MyMav from the beginning of the registration period through the late registration period. After the late registration period, students must see their academic advisor to drop a class or withdraw. Undeclared students must see an advisor in the University Advising Center. Drops can continue through a point two-thirds of the way through the term or session. It is the student's responsibility to officially withdraw if they do not plan to attend after registering. **Students will not be automatically dropped for non-attendance.** Repayment of certain types of financial aid administered through the University may be required as the result of dropping classes or withdrawing. Contact the Financial Aid Office for more information.

The last day to officially drop a class from the spring 2012 semester is **March 30th**.

AMERICANS WITH DISABILITIES ACT POLICY:

Please inform me if you have a disability requiring special consideration for classes and exams, and provide me with the relevant paperwork during the first two weeks of class. The University's policy is as follows:

"The University of Texas at Arlington is on record as being committed to both the spirit and letter of federal equal opportunity legislation; reference Public Law 92-112 - The Rehabilitation Act of 1973 as amended. With the passage of federal legislation entitled *Americans with Disabilities Act (ADA)*, pursuant to section 504 of the Rehabilitation Act, there is renewed focus on providing this population with the same opportunities enjoyed by all citizens. As a faculty member, I am required by law to provide "reasonable accommodations" to students with disabilities, so as not to discriminate on the basis of that disability. Student responsibility primarily rests with informing faculty of their need for accommodation and in providing authorized documentation through designated administrative channels. Information regarding specific diagnostic criteria and policies for obtaining academic accommodations can be found at www.uta.edu/disability. Also, you may visit the Office for Students with Disabilities in room 102 of University Hall or call them at (817) 272-3364."

WRITING SUPPORT:

Having trouble with that essay? Contact the UTA writing center on-line at:

<http://www.uta.edu/owl/>

Not only will they give you advice on your work, they also have short workshops throughout the semester. Writing well is one of the most valuable skills you can acquire in college!

STUDENT SUPPORT SERVICES AVAILABLE:

There are several programs at UTA that help students succeed, including: learning assistance, developmental education, advising and mentor, admissions and transition, and federally funded programs. If you need help with personal, social, or academic issues, or would like more information about the programs described above, please contact the Office of Student Success Programs (817-272-6107).

ELECTRONIC COMMUNICATION POLICY:

I expect you to check your UTA email daily during the week!

The University of Texas at Arlington has adopted the University "MavMail" address as the sole official means of communication with students. MavMail is used to remind students of important deadlines, advertise events and activities, and permit the University to conduct official transactions exclusively by electronic means. For example, important information concerning registration, financial aid, payment of bills, and graduation are now sent to students through the MavMail system. All students are assigned a MavMail account. ***Students are responsible for checking their MavMail regularly.*** Information about activating and using MavMail is available at <http://www.uta.edu/oit/email/>. There is no additional charge to students for using this account, and it remains active even after they graduate from UT Arlington. To obtain your NetID or for logon assistance, visit:

<https://webapps.uta.edu/oit/selfservice/>.

If you are unable to resolve your issue from the Self-Service website, contact the Helpdesk at helpdesk@uta.edu.

READING, LECTURE AND DISCUSSION SCHEDULE:

(Subject to revision)

Readings should be completed by the beginning of class on the date given in the schedule.

Week 1:

January 17th: Introduction to Biological Anthropology

Reading: Stanford et al., Introduction

January 19th: Introduction to evolutionary concepts

Reading: Stanford et al., Ch. 1

Week 2:

January 24th: DNA and the cell

Reading: Stanford et al., Ch. 2

January 26th: DNA and the cell

***** Plagiarism Tutorial Due *****

Week 3:

January 31st: Genetic inheritance and expression

Reading: Stanford et al., Ch. 3

February 2nd: Genetic inheritance and expression

Week 4:

February 7th: Population genetics and evolution

Reading: Stanford et al., Ch. 4 and Appendix C

February 9th: Population genetics and evolution

***** Worksheet 1 due*****

Week 5:

February 14th: **Unit Quiz 1** and Human variation and adaptation

Reading: Stanford et al., Ch. 5

February 16th: Biomedical anthropology, bioarchaeology, and forensic anthropology

Reading: Stanford et al., Ch. 16 and 18

Week 6:

February 21st: Introduction to the Primates

Reading: Stanford et al., Ch. 6

February 23rd: Primates cont.

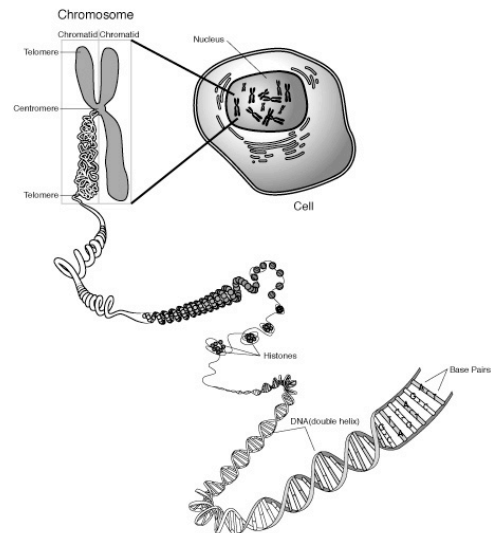
Week 7:

February 28th: Primate anatomy and adaptation

Reading: Stanford et al., pp.447-458, and Appendices A & B

*Note: Your textbook is a bit light on primate anatomy, so it is even more important to be in class this week.

March 1st: Primate Anatomy and In-Class Lab



<http://www.access Excellence.org/AB/GG/chromosome.html>

Week 8:

March 6th: Primate Behavior and communication

Reading: Stanford et al., Ch. 7

& pp. 459 - 471 (Section heading: "Language: Biology and Evolution")

March 8th: Primate Behavior & review for Midterm

Reading: Stanford et al., pp. 298-303

***** Worksheet 2 due*****

Week 9:

-----SPRING BREAK-----

Week 10:

March 20th: **Midterm Exam**

March 22nd: Geologic Time and the Fossil Record

Reading: Stanford et al., Ch. 8

Week 11:

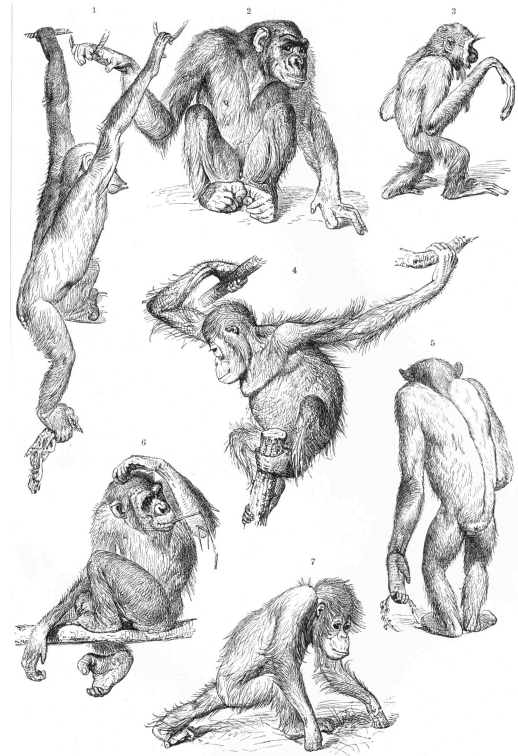
March 27th: Fossil Record continued and Primate Evolution

Reading: Stanford et al., Ch. 9

***** Essay due*****

March 29th: Bipedalism

Reading: Stanford et al., pp. 286-297



Week 12:

April 3rd: Earliest Hominins

Reading: Stanford et al., Ch. 11

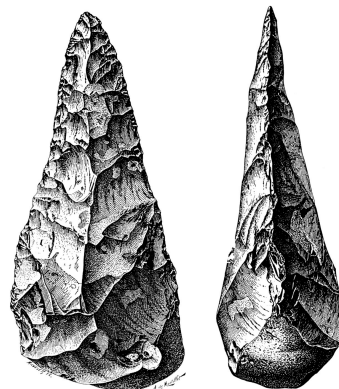
April 4th: Early Hominins and **In-Class Fossil lab**

Week 13:

April 10th: Emergence of the genus *Homo*

Reading: Stanford et al., Ch. 12

April 12th: *Homo erectus*



Week 14:

April 17th: **Unit Quiz 2** & Archaic *Homo sapiens*

Reading: Stanford et al., Ch. 13

April 19th: Archaics to Neanderthals

Week 15:

April 24th: Neanderthals & Emergence of Modern Humans

Reading: Stanford et al., Ch. 14

April 26th: Modern Humans and the evolution of human behavior

Reading: Stanford et al., Ch. 17

Week 16th:

May 1st: **In-Class Fossil Lab 2**

May 3rd: Review for Final Exam

******* Worksheet 3 due*******

May 8th: **Final Exam**

