

# ANCIENT EGYPTIAN & NEAR EASTERN ART

## and ARCHITECTURE and ARCHAEOLOGY and CULTURE

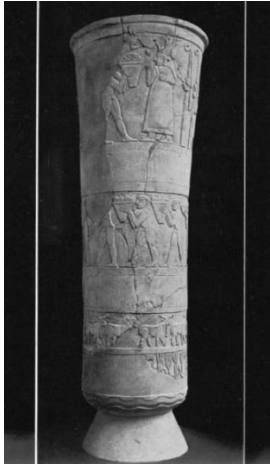
---

Fall 2017 | ART 3316 001 | MW 2:30 - 3:50 pm | Room: FA 2102A | Instructor: Dr. Leah McCurdy

**FINAL EXAM DATE: MONDAY, Dec 11 @ 2:00 – 4:30pm** | <https://mentis.uta.edu/explore/profile/leah-mc-curdy>

Office Hours: Mon & Wed 1:00 - 2:00 pm | Office: FA 297 | 817.272.2891 | Email: leah.mccurdy@uta.edu

**Contact me via email. Weekdays: response within 24 hours. Weekends: response by next regular business day.**



Warka Vase. Sumerian  
Late Uruk Period from Uruk,  
Iraq, ca. 3500-3000 BCE.



The Great Sphinx. Old Kingdom  
from Giza, Egypt,  
ca. 2520-2494 BCE.



Detail of the defeat of Elamites. Late  
Assyrian Period from Nineveh, Iraq,  
ca. 668-631 BCE.



King Akhenaten. New  
Kingdom from Karnak,  
Egypt, ca. 1353-1335 BCE.

---

Egypt, Mesopotamia, and the Near East as a whole are regions where human cultures invested in the creation of expressive high art forms and monumental architecture. Such works attest to the religious, political, economic, and social ideologies of cultures over time. This course introduces select aspects of the material culture of ancient Mesopotamia, Egypt, and the Near East with emphasis on religion and kingship.

---

### COURSE MATERIALS & READINGS

- **MESO:** Frankfort, Henri (1996) *The Art and Architecture of the Ancient Orient*. Yale University Press.
  - **EGYPT:** Robins, Gay (2000 OR 2008) *The Art of Ancient Egypt*. Harvard University Press.
  - **BB:** All other resources & readings available on Blackboard
- 

### STUDENT LEARNING OUTCOMES

- Consider the trajectory of art production and social developments in Egypt and the Near East
  - Compare the traditions of ancient Egyptian and Near Eastern cultures with particular emphasis on the development of state-level societies
  - Investigate and analyze the circumstances and consequences of cultural heritage loss and destruction
  - Practice skills to communicate about artworks, cultural history, and social change
  - Develop collaborative skills to communicate ideas within groups and achieve collective goals
- 

**This syllabus represents the current plans and objectives for our course. As we go through the semester, these plans may need to change. I will communicate any changes verbally and in writing. Be sure to stay up-to-date with the schedule and any changes made over the course of the semester.**

## **EARNING A GRADE IN THIS COURSE**

---

### **DAILY ATTENDANCE (10%) & PARTICIPATION (10%)**

Attendance will be taken every class meeting. Attendance grades will be determined based on this rubric:

- Earned 10% - consistent and punctual attendance
- Earned 5% - exceeds 3 unexcused absences
- Earned 0% - exceeds 5 unexcused absences (i.e. the highest grade you could earn is 90%)

Absences can ONLY be excused with **documentation** of an emergency, religious observance, or official university event. Documentation must come in the form of a signed and dated doctor's or official's note. If you are absent, it is your responsibility to consult with me or another student about notes, handouts, and assignments you missed.

In addition to participation relating to note-taking and discussion, there will be a variety of in-class activities focused on review and/or application of course material that will require your participation. As a collection, these participation activities will constitute 10% of your grade. You will earn points for each activity according to its specific instructions. I will drop your lowest participation grade (including a 0 for unexcused absences). Participation grades can only be made-up for excused absences.

---

### **QUIZ & EXAMS (50%)**

Quiz and exam dates are indicated on the course schedule. The quiz and exams will include: 1) identifications of a selection of artworks, including title, culture/period, location, date, artist (if known), significance; 2) short answer responses focused on questions of significance with respect to individual or multiple artworks; 3) multiple choice, true/false, and matching questions. Questions will be drawn from lecture topics, reading assignments, and in-class discussions. You will need to bring a short scantron to each quiz and exam. **Please note that ARTWORK images will be uploaded to Blackboard after each class session. Cramming is NOT recommended!** Grade percentages for each component are as follows:

**Quiz:** 10%

**Midterm Exam:** 15%

**Final Exam:** 25%

---

### **CULTURAL HERITAGE PROJECT & PAPER (30%)**

You will conduct a research project focused on a site, structure, or artwork from the Near East or Egypt that has been impacted by cultural heritage loss or destruction, such as looting, physical destruction, black market antiquities selling, or other similar activities. Particular interest should be paid to contemporary conflicts in the Middle East or Egypt. All students will write a formal paper that must include:

1. Formal analysis of the site, structure, or artwork upon which you focus
2. Socio-historical analysis of the significance of the site, structure, or artwork
3. Description of the loss, destruction, or similar that impacts/impacted the site, structure, or artwork
4. Discussion of cultural heritage preservation and protection generally and in the region
5. Argument/thesis for an action or policy that could prevent similar impacts on cultural heritage
6. ART HISTORY MAJORS & GRAD STUDENTS will provide a 10-min presentation on their paper

Detailed instructions regarding format, bibliography, and citations will be provided in class and on Blackboard. See class schedule for specific deadlines for components.

**OPTIONAL SERVICE LEARNING EXTRA CREDIT:** To be determined according to project choice.

---

# COURSE POLICIES

---

## GRADE SCALE

Your final grade will be calculated as a percentage according to the component percentages provided in the "Course Components" section. Your final grade percentage will be rounded to the nearest whole number, e.g. 89.2 = 89 but 89.6 = 90. Letter grades and GPA will be determined according to the following scale:

|                                      |
|--------------------------------------|
| A = 90-100% (4.00 GPA) - Excellent   |
| B = 80-89% (3.00 GPA) – Good         |
| C = 70-79% (2.00 GPA) – Satisfactory |
| D = 60-69% (1.00 GPA) – Poor         |
| F = 59-0% (0.00 GPA) - Fail          |

Grades will be posted on Blackboard. I recommend setting preferences to notify you about grades & announcements to track your progress throughout the semester. All students will receive Midterm Grades and Final Grades according to the university schedule.

---

## LATE WORK, MAKE-UPS, & INCOMPLETES

See attendance policy in the "Course Components" section. Late submissions of the Cultural Heritage Project will be penalized with a 10% deduction per calendar day. Make-ups for quizzes and exams will not be allowed except for excused absences (see attendance policy). Incompletes will be given only in the event of documented and extreme emergencies. There are no grade changes.

---

## CLASSROOM ETIQUETTE & APPROPRIATE USE OF TECHNOLOGY

**ALL PHONES & MOBILE DEVICES MUST BE SILENCED & PUT AWAY UPON ENTERING THE CLASSROOM.** You may take notes with a laptop or tablet. Other non-class related activities on such devices are not allowed. Repeated issues with phones or electronics will result in the offending student receiving a zero on the daily grade and/or changes to no electronics use in class for all students. If you are expecting an important call or text during class, let me know beforehand.

---

## ACADEMIC INTEGRITY

Students enrolled in all UT Arlington courses are expected to adhere to the UT Arlington Honor Code:

*I pledge, on my honor, to uphold UT Arlington's tradition of academic integrity, a tradition that values hard work and honest effort in the pursuit of academic excellence.*

*I promise that I will submit only work that I personally create or contribute to group collaborations, and I will appropriately reference any work from other sources. I will follow the highest standards of integrity and uphold the spirit of the Honor Code.*

UT Arlington faculty members may employ the Honor Code in their courses by having students acknowledge the honor code as part of an examination or requiring students to incorporate the honor code into any work submitted. Per UT System Regents' Rule 50101, §2.2, suspected violations of university's standards for academic integrity (including the Honor Code) will be referred to the Office of Student Conduct. Violators will be disciplined in accordance with University policy, which may result in the student's suspension or expulsion from the University. Additional information is available at <https://www.uta.edu/conduct/>.

---

---

## UNIVERSITY ATTENDANCE POLICY

At The University of Texas at Arlington, taking attendance is not required but attendance is a critical indicator in student success. Each faculty member is free to develop his or her own methods of evaluating students' academic performance, which includes establishing course-specific policies on attendance. As the instructor of this section, I have established the attendance policy described in the "Earning a Grade in this Course" section. While UT Arlington does not require instructors to take attendance in their courses, the U.S. Department of Education requires that the University have a mechanism in place to mark when Federal Student Aid recipients "begin attendance in a course." UT Arlington instructors will report when students begin attendance in a course as part of the final grading process. Specifically, when assigning a student a grade of F, faculty report the last date a student attended their class based on evidence such as a test, participation in a class project or presentation, or an engagement online via Blackboard. This date is reported to the Department of Education for federal financial aid recipients.

---

## DROP POLICY

Students may drop or swap (adding and dropping a class concurrently) classes through self-service in MyMav from the beginning of the registration period through the late registration period. After the late registration period, students must see their academic advisor to drop a class or withdraw. Undeclared students must see an advisor in the University Advising Center. Drops can continue through a point two-thirds of the way through the term or session. It is the student's responsibility to officially withdraw if they do not plan to attend after registering. **Students will not be automatically dropped for non-attendance.** Repayment of certain types of financial aid administered through the University may be required as the result of dropping classes or withdrawing. For more information, contact the Office of Financial Aid and Scholarships (<http://www.uta.edu/ses/fao>).

---

## SUPPORT AVAILABLE TO YOU

UT Arlington provides a variety of resources and programs designed to help students develop academic skills, deal with personal situations, and better understand concepts and information related to their courses. Resources include tutoring, major-based learning centers, developmental education, advising and mentoring, personal counseling, and federally funded programs. For individualized referrals, students may visit the reception desk at University College (Ransom Hall), call the Maverick Resource Hotline at 817-272-6107, contact [resources@uta.edu](mailto:resources@uta.edu), or view the info at <http://www.uta.edu/universitycollege/resources/index.php>.

- Visual Resource Commons (FA 2109) and Rita Lasater ([rlasater@uta.edu](mailto:rlasater@uta.edu))
  - UTA Library ([library.uta.edu/](http://library.uta.edu/) 817-272-3395); Art History Librarian Diane Shepelwich ([dianec@uta.edu](mailto:dianec@uta.edu))
  - The English Writing Center (**FREE** appointments and walk-in; [www.uta.edu/owl/](http://www.uta.edu/owl/) ; Central Library 411)
  - The IDEAS Center offers **FREE** tutoring ([ideas@uta.edu](mailto:ideas@uta.edu); 817-272-6593); located 2<sup>nd</sup> Floor of Library
  - University Tutorial & Supplemental Instruction (UTSI) (817-272-2617; [www.uta.edu/utsi](http://www.uta.edu/utsi) ; Ransom Hall 205) offering 60 minute one-on-one tutoring sessions, Start Strong Freshman tutoring program, and Supplemental Instruction.
  - Counseling and Psychological Services (CAPS) ([www.uta.edu/caps/](http://www.uta.edu/caps/) ; 817-272-3671); available to all students to help increase their understanding of personal issues, address mental and behavioral health problems and make positive changes in their lives
  - On-campus Emergency – UT Arlington Police Department 817-272-3003 or 911.
-

---

## DIFFERENTLY-ABLED ACCOMMODATIONIS

UT Arlington is on record as being committed to both the spirit and letter of all federal equal opportunity legislation, including *The Americans with Disabilities Act (ADA)*, *The Americans with Disabilities Amendments Act (ADAAA)*, and *Section 504 of the Rehabilitation Act*. All instructors at UT Arlington are required by law to provide "reasonable accommodations" to students with disabilities, so as not to discriminate on the basis of disability. Students are responsible for providing the instructor with official notification in the form of a letter certified by the Office for Students with Disabilities (OSD). Only those students who have officially documented a need for an accommodation will have their request honored. Students experiencing a range of conditions (Physical, Learning, Chronic Health, Mental Health, and Sensory) that may cause diminished academic performance or other barriers to learning may seek services and/or accommodations by contacting: **The Office for Students with Disabilities, (OSD)** [www.uta.edu/disability](http://www.uta.edu/disability) or calling 817-272-3364. Information regarding diagnostic criteria and policies for obtaining disability-based academic accommodations can be found at [www.uta.edu/disability](http://www.uta.edu/disability).

---

## NON-DISCRIMINATION POLICY

*The University of Texas at Arlington does not discriminate on the basis of race, color, national origin, religion, age, gender, sexual orientation, disabilities, genetic information, and/or veteran status in its educational programs or activities it operates.* For more information, visit [uta.edu/eos](http://uta.edu/eos).

---

## TITLE IX POLICY

The University of Texas at Arlington ("University") is committed to maintaining a learning and working environment that is free from discrimination based on sex in accordance with Title IX of the Higher Education Amendments of 1972 (Title IX), which prohibits discrimination on the basis of sex in educational programs or activities; Title VII of the Civil Rights Act of 1964 (Title VII), which prohibits sex discrimination in employment; and the Campus Sexual Violence Elimination Act (SaVE Act). Sexual misconduct is a form of sex discrimination and will not be tolerated. For information regarding Title IX, visit [www.uta.edu/titleIX](http://www.uta.edu/titleIX) or contact Ms. Jean Hood, Vice President and Title IX Coordinator at (817) 272-7091 or [jmhood@uta.edu](mailto:jmhood@uta.edu).

---

## ELECTRONIC COMMUNICATION

UT Arlington has adopted MavMail as its official means to communicate with students about important deadlines and events, as well as to transact university-related business regarding financial aid, tuition, grades, graduation, etc. All students are assigned a MavMail account and are responsible for checking the inbox regularly. There is no additional charge to students for using this account, which remains active even after graduation. Info about activating and using MavMail: <http://www.uta.edu/oit/cs/email/mavmail.php>.

---

## CAMPUS CARRY

Effective August 1, 2016, the Campus Carry law (Senate Bill 11) allows those licensed individuals to carry a concealed handgun in buildings on public university campuses, except in locations the University establishes as prohibited. Under the new law, openly carrying handguns is not allowed on college campuses. For more information, visit <http://www.uta.edu/news/info/campus-carry/>

---



---

## **STUDENT FEEDBACK SURVEY**

At the end of each term, students enrolled in face-to-face and online classes categorized as "lecture," "seminar," or "laboratory" are directed to complete an online Student Feedback Survey (SFS). Instructions on how to access the SFS for this course will be sent directly to each student through MavMail approximately 10 days before the end of the term. Each student's feedback via the SFS database is aggregated with that of other students enrolled in the course. Students' anonymity will be protected to the extent that the law allows. UT Arlington's effort to solicit, gather, tabulate, and publish student feedback is required by state law and aggregate results are posted online. Data from SFS is also used for faculty and program evaluations. For more information, visit <http://www.uta.edu/sfs>.

---

## **FINAL REVIEW WEEK**

For semester-long courses, a period of five class days prior to the first day of final examinations in the long sessions shall be designated as Final Review Week. The purpose of this week is to allow students sufficient time to prepare for final examinations. During this week, there shall be no scheduled activities such as required field trips or performances; and no instructor shall assign any themes, research problems or exercises of similar scope that have a completion date during or following this week unless specified in the class syllabus. During Final Review Week, an instructor shall not give any examinations constituting 10% or more of the final grade, except makeup tests and laboratory examinations. In addition, no instructor shall give any portion of the final examination during Final Review Week. During this week, classes are held as scheduled. In addition, instructors are not required to limit content to topics that have been previously covered; they may introduce new concepts as appropriate.

---

## **EMERGENCY EXIT PROCEDURES**

Should we experience an emergency event that requires us to vacate the building, students should exit the room and move toward the nearest exit, which is located down the main stairwell on the second floor. When exiting the building during an emergency, one should never take an elevator but should use the stairwells. Faculty members and instructional staff will assist students in selecting the safest route for evacuation and will make arrangements to assist individuals with disabilities.

---

# ART 3316 CLASS SCHEDULE

|           |                                                                         |                                                                                                        |
|-----------|-------------------------------------------------------------------------|--------------------------------------------------------------------------------------------------------|
| Week 1    | NO CLASS                                                                | <b>READINGS from MESO &amp; EGYPT indicated by ch. title or pg #. BB readings indicated by author.</b> |
| M Aug 28  | What are we doing? Course Overview                                      | None                                                                                                   |
| W Aug 30  | Mesopotamia – Intro & Uruk Period                                       | MESO: Introduction                                                                                     |
| M Sept 4  | NO CLASS - LABOR DAY                                                    | None                                                                                                   |
| W Sept 6  | Mesopotamia – Uruk Period continued                                     | MESO: The Emergence of Sumerian Art...                                                                 |
| M Sept 11 | Mesopotamia – Early Dynastic Period                                     | MESO: The Early Dynastic Period...                                                                     |
| W Sept 13 | Mesopotamia – EDP continued                                             | BB: Moorey                                                                                             |
| M Sept 18 | Mesopotamia – The Akkadian Dynasty                                      | MESO: The Akkadian Period...                                                                           |
| W Sept 20 | Review & Project Overview                                               | BB: Schuster; Garen and Carleton                                                                       |
| M Sept 25 | <b>QUIZ</b>                                                             | None                                                                                                   |
| M Sept 27 | Egypt – Intro & Predynastic Period                                      | EGYPT: Understanding Ancient Egyptian Art                                                              |
| M Oct 2   | Egypt – Early Dynastic Period                                           | EGYPT: Origins: The Early Dynastic Period                                                              |
| W Oct 4   | Egypt – Old Kingdom                                                     | EGYPT: The First Flowering: The Old Kingdom (I)                                                        |
| M Oct 9   | Egypt – Old Kingdom continued                                           | EGYPT: A Golden Age: The Old Kingdom (II)                                                              |
| W Oct 11  | Egypt – Old Kingdom continued                                           | BB: Metropolitan Museum                                                                                |
| M Oct 16  | Review & Library <b>PROJECT CHOICE</b>                                  | BB: Barnet                                                                                             |
| W Oct 18  | <b>MIDTERM EXAM</b>                                                     | None                                                                                                   |
| M Oct 23  | Egypt – Middle Kingdom                                                  | EGYPT: Diversity in Disunity & Return to Heights                                                       |
| W Oct 25  | Egypt – Middle Kingdom continued                                        | EGYPT: Change and Collapse...                                                                          |
| M Oct 30  | Mesopotamia – Neo-Sumerian Period                                       | MESO: Lagash & Third Dynasty of Ur (93-107)                                                            |
| W Nov 1   | Mesopotamia – Isin-Larsa Period                                         | MESO: Isin-Larsa Period & Hammurabi (107-126)                                                          |
| M Nov 6   | Mesopotamia – Early Assyrian Period<br><b>PROJECT ANNOTATED BIB DUE</b> | MESO: Beginnings of Assyrian... & Late Assyrian                                                        |
| W Nov 8   | Mesopotamia – Late Assyrian Period                                      | BB: Winter                                                                                             |
| M Nov 13  | Egypt – New Kingdom                                                     | EGYPT: A New Momentum: The New Kingdom (I)                                                             |
| W Nov 15  | Egypt – New Kingdom continued                                           | EGYPT: The Great Heresy: The New Kingdom (II)                                                          |
| M Nov 20  | Egypt – New Kingdom continued                                           | EGYPT: The Glories of Empire: New Kingdom (III)                                                        |
| W Nov 22  | In-class video                                                          | BB: Baines                                                                                             |
| M Nov 27  | Mesopotamia - Neo-Babylonian Period                                     | MESO: The Neo-Babylonian Period...                                                                     |
| W Nov 29  | <b>PAPER DUE &amp; PRESENTATIONS</b>                                    | None                                                                                                   |
| M Dec 4   | Mesopotamia – Achaemenid Persians                                       | MESO: Achaemenian Art (348-378)                                                                        |
| W Dec 6   | Egypt – Later periods & Review                                          | EGYPT: 210-251                                                                                         |
| M Dec 11  | <b>FINAL EXAM @ 2:00 – 4:30pm</b>                                       | <b>NOTE DIFFERENT START TIME</b>                                                                       |

SUBJECT TO CHANGE