

CSE 1320: Intermediate Programming

- **Instructor**

Name: Laleh Ghandehari

E-Mail: laleh.shghandehari@uta.edu

Website: <http://barbie.uta.edu/~laleh>

Office Location: ERB 320

Office Hours: Tue - Thu 9:30 - 11:00 AM

Section: Tue - Thu 8:00 – 9:20 AM - WH 308

- **Course Description from Catalog**

Programming concepts beyond basic control and data structures. Emphasis is given to data structures including linked-lists and trees as well as modular design consistent with software engineering principles. Prerequisite: ENGR 1300, CSE 1105, CSE 1310 or CSE 1312, and MATH 1421 or MATH 1426 (or concurrently).

- **Student Learning Outcomes**

- Introduction to the C programming language
- Exposure to basic data structures
- Learn to use the Linux operating system

- **Textbook**

C By Discovery (4th Edition), Foster and Foster. ISBN-13: 978-1576761700 ISBN-10: 1576761703

Reference: Intermediate C Programming, Lu. ISBN: 9781498711630

<p>Emergency Phone Numbers: In case of an on-campus emergency, call the UT Arlington Police Department at 817-272-3003 (non-campus phone), 2-3003 (campus phone). You may also dial 911. Non-emergency number 817-272-3381</p>

- **Grading Policy**

Assignments	30%
Exam 1	20%
Exam 2	20%
Final Exam	30%

Grading is based on the following scale:

- A: 100-90
- B: 89-80
- C: 79-70
- D: 69-60
- F: below 59.

The instructor reserves the right to lower these thresholds, based on the distribution of scores and the degree of difficulty of the assignments and exams.

- **General Policies**

- Students are responsible for checking blackboard frequently for course related material and announcements.
- There are approximately 4 assignments.
- All assignments must be submitted via Blackboard.
- No deadline extensions for the entire class will be provided.
- The last assignment may have a due date during final review week.
- If you make multiple submissions to Blackboard, the latest submission will be graded.
- After you submit your solutions, make sure that you submitted the correct files, download your submission and double check.
- If you cannot submit on Blackboard, e-mail your solution to the instructor and TA before the deadline.
- Assignments can be submitted up to 20 hours late, 5% penalty points per hour.
- The last assignment may have a due date during final review week.
- All assignments should be done individually, although you are welcomed to discuss the material with each other.
- All exams are closed book.
- No makeup exams or assignments will be given.
- The instructor reserves the right to modify the policies, calendar, assignments, slides or due dates if necessary.

- **Attendance**

At The University of Texas at Arlington, taking attendance is not required but attendance is a critical indicator in student success. Each faculty member is free to develop his or her own methods of

evaluating students' academic performance, which includes establishing course-specific policies on attendance. As the instructor of this section, I will follow the following policy:

- Attendance is NOT required for lectures, and will NOT be used in calculating the semester grade. However, students (Not instructor nor teacher assistant) are responsible for the material covered in the lectures.
- Attendance is required for exams. Absences for exams will only be excused for medical or other emergencies, in strict adherence with UTA policy. All emergencies must be reported as early as possible and documented in writing. No make-up exams will be given.

However, while UT Arlington does not require instructors to take attendance in their courses, the U.S. Department of Education requires that the University have a mechanism in place to mark when Federal Student Aid recipients "begin attendance in a course." UT Arlington instructors will report when students begin attendance in a course as part of the final grading process. Specifically, when assigning a student a grade of F, faculty report the last date a student attended their class based on evidence such as a test, participation in a class project or presentation, or an engagement online via Blackboard. This date is reported to the Department of Education for federal financial aid recipients.

- **Drop Policy**

Students may drop or swap (adding and dropping a class concurrently) classes through self-service in MyMav from the beginning of the registration period through the late registration period. After the late registration period, students must see their academic advisor to drop a class or withdraw. Undeclared students must see an advisor in the University Advising Center. Drops can continue through a point two-thirds of the way through the term or session. It is the student's responsibility to officially withdraw if they do not plan to attend after registering. **Students will not be automatically dropped for non-attendance.** Repayment of certain types of financial aid administered through the University may be required as the result of dropping classes or withdrawing. For more information, contact the Office of Financial Aid and Scholarships (<http://www.uta.edu/aao/fao/>).

- **Disability Accommodations**

UT Arlington is on record as being committed to both the spirit and letter of all federal equal opportunity legislation, including *The Americans with Disabilities Act (ADA)*, *The Americans with Disabilities Amendments Act (ADAAA)*, and *Section 504 of the Rehabilitation Act*. All instructors at UT Arlington are required by law to provide "reasonable accommodations" to students with disabilities, so as not to discriminate on the basis of disability. Students are responsible for providing the instructor with official notification in the form of a **letter certified** by the Office for Students with Disabilities (OSD). Only those students who have officially documented a need for an accommodation will have their request honored. Students experiencing a range of conditions (Physical, Learning, Chronic Health, Mental Health, and Sensory) that may cause diminished academic performance or other barriers to learning may seek services and/or accommodations by contacting:

The Office for Students with Disabilities, (OSD) www.uta.edu/disability or calling 817-272-3364. Information regarding diagnostic criteria and policies for obtaining disability-based academic accommodations can be found at www.uta.edu/disability.

Counseling and Psychological Services, (CAPS) www.uta.edu/caps/ or calling 817-272-3671 is also available to all students to help increase their understanding of personal issues, address mental and behavioral health problems and make positive changes in their lives.

- **Non-Discrimination Policy**

The University of Texas at Arlington does not discriminate on the basis of race, color, national origin, religion, age, gender, sexual orientation, disabilities, genetic information, and/or veteran status in its educational programs or activities it operates. For more information, visit uta.edu/eos.

- **Title IX Policy**

The University of Texas at Arlington ("University") is committed to maintaining a learning and working environment that is free from discrimination based on sex in accordance with Title IX of the Higher Education Amendments of 1972 (Title IX), which prohibits discrimination on the basis of sex in educational programs or activities; Title VII of the Civil Rights Act of 1964 (Title VII), which prohibits sex discrimination in employment; and the Campus Sexual Violence Elimination Act (SaVE Act). Sexual misconduct is a form of sex discrimination and will not be tolerated. *For information regarding Title IX, visit www.uta.edu/titleIX or contact Ms. Jean Hood, Vice President and Title IX Coordinator at (817) 272-7091 or jmhood@uta.edu.*

- **Academic Integrity**

Students enrolled all UT Arlington courses are expected to adhere to the UT Arlington Honor Code:

I pledge, on my honor, to uphold UT Arlington's tradition of academic integrity, a tradition that values hard work and honest effort in the pursuit of academic excellence.

I promise that I will submit only work that I personally create or contribute to group collaborations, and I will appropriately reference any work from other sources. I will follow the highest standards of integrity and uphold the spirit of the Honor Code.

UT Arlington faculty members may employ the Honor Code in their courses by having students acknowledge the honor code as part of an examination or requiring students to incorporate the honor code into any work submitted. Per UT System *Regents' Rule* 50101, §2.2, suspected violations of university's standards for academic integrity (including the Honor Code) will be referred to the Office of Student Conduct. Violators will be disciplined in accordance with University policy, which may result in the student's suspension or expulsion from the University. Additional information is available at <https://www.uta.edu/conduct/>.

- **Electronic Communication**

UT Arlington has adopted MavMail as its official means to communicate with students about important deadlines and events, as well as to transact university-related business regarding financial aid, tuition, grades, graduation, etc. All students are assigned a MavMail account and are responsible for checking the inbox regularly. There is no additional charge to students for using this account, which remains active even after graduation. Information about activating and using MavMail is available at <http://www.uta.edu/oit/cs/email/mavmail.php>.

- **Campus Carry**

Effective August 1, 2016, the Campus Carry law (Senate Bill 11) allows those licensed individuals to carry a concealed handgun in buildings on public university campuses, except in locations the University establishes as prohibited. Under the new law, openly carrying handguns is not allowed on college campuses. For more information, visit <http://www.uta.edu/news/info/campus-carry/>

- **Student Feedback Survey**

At the end of each term, students enrolled in face-to-face and online classes categorized as “lecture,” “seminar,” or “laboratory” are directed to complete an online Student Feedback Survey (SFS). Instructions on how to access the SFS for this course will be sent directly to each student through MavMail approximately 10 days before the end of the term. Each student’s feedback via the SFS database is aggregated with that of other students enrolled in the course. Students’ anonymity will be protected to the extent that the law allows. UT Arlington’s effort to solicit, gather, tabulate, and publish student feedback is required by state law and aggregate results are posted online. Data from SFS is also used for faculty and program evaluations. For more information, visit <http://www.uta.edu/sfs>.

- **Final Review Week**

For semester-long courses, a period of five class days prior to the first day of final examinations in the long sessions shall be designated as Final Review Week. The purpose of this week is to allow students sufficient time to prepare for final examinations. During this week, there shall be no scheduled activities such as required field trips or performances; and no instructor shall assign any themes, research problems or exercises of similar scope that have a completion date during or following this week *unless specified in the class syllabus*. During Final Review Week, an instructor shall not give any examinations constituting 10% or more of the final grade, except makeup tests and laboratory examinations. In addition, no instructor shall give any portion of the final examination during Final Review Week. During this week, classes are held as scheduled. In addition,

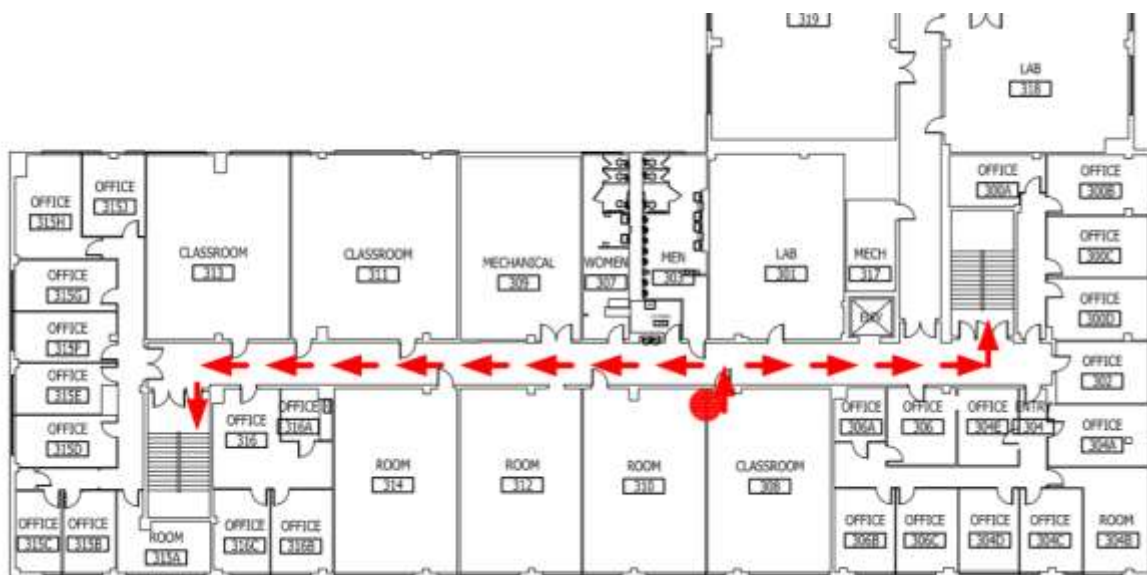
instructors are not required to limit content to topics that have been previously covered; they may introduce new concepts as appropriate.

- **Student Support Services**

UT Arlington provides a variety of resources and programs designed to help students develop academic skills, deal with personal situations, and better understand concepts and information related to their courses. Resources include [tutoring](#), [major-based learning centers](#), developmental education, [advising and mentoring](#), personal counseling, and [federally funded programs](#). For individualized referrals, students may visit the reception desk at University College (Ransom Hall), call the Maverick Resource Hotline at 817-272-6107, send a message to resources@uta.edu, or view the information at <http://www.uta.edu/universitycollege/resources/index.php>.

- **Emergency Exit Procedures**

Should we experience an emergency event that requires us to vacate the building, students should exit the room and move toward the nearest exit. When exiting the building during an emergency, one should never take an elevator but should use the stairwells. Faculty members and instructional staff will assist students in selecting the safest route for evacuation and will make arrangements to assist individuals with disabilities.



- **Tentative Schedule**

Week	Topic	Description
Week #1	Introduction/Linux	
Week #2	Condition/Loop	
Week #3	Array/String	
Week #4	Function/Pointer	HW #1
Week #5	String/Variable types	
Week #6	Review/Exam 1	
Week #7	Dynamic Memory/ Memory Stack & heap	
Week #8	Dynamic Programming/Recursive Function	HW #2
Week #9	I/O/structure	
Week #10	Review/Exam 2	
Week #11	Linked list	
Week #12	Queue/Stack	HW #3
Week #13	Binary Tree	
Week #14	Advanced topics	
Week #15	Review	HW #4
12/10	Final	5:30-8:00pm - departmental

Note: As the instructor for this course, I reserve the right to adjust this schedule in any way that serves the educational needs of the students enrolled in this course.